

We are glad you are worshipping with us this morning. If you are a **Visitor** we ask you to sign a Guest Card and drop it in the offering plate so we can acknowledge your visit. Join us to Worship at 11:00 am.

A **staffed nursery** is provided for children from 6 months to age two. During the offering, children from ages Preschool to Kindergarten are dismissed for Junior Church in the Board Room.

ORDER OF SERVICE

Opening Song
Welcome & Announcements
Worship in Song
Scripture Reading & Prayer
Offering
Worship in Song
Message
Closing Song
Prayer & Benediction

WORSHIP TEAM:

Lilly R
Bev S
Joel U
Donna J
Jason U
Rick P

Senior Pastor: Rev. Mark Woods
Associate Pastor: Rev. Jonathan Kroeker
Youth Pastor: Ben Clouston
Office Administrator: Bev Sheridan

SEEK A HEART OF WISDOM PROVERBS 2:1-22

_____ it from the right _____ – *Proverbs 1:7*

_____ to your _____ – *Proverbs 1:8-9*

_____ the right kind of _____ – *Proverbs 1:10-19*

_____ in the _____ – *Proverbs 3:5-6*

_____ to _____ – *Proverbs 3:11-12*

PRAISE & PRAYER

- **Pray for** our shut-ins: Lydia K and Lloyd M
- **Pray for** Paul and Melissa E who serve in church planting and leadership training in Japan.
- **Pray for** the S family as they deal with the loss of Rob, who went to be the Lord this past week after a battle with cancer. Pray for Karen & Isaac, Dave & Marilyn, Katherina & Joel, that God will give them peace and comfort at this time of great loss. Also, consider what God would have you do to graciously and compassionately reach out to the family with words and deeds of kindness and sympathy.
- **Pray for** George U who was admitted into Concordia hospital this week.

SUNDAY, JANUARY 10TH, 2016

THIS MORNING:

I enjoy looking at maps. One of my favourite subjects in school was geography because we got to work with maps. I loved seeing how the coastline of a region would trace the outline of a country. I remember shading in the coastline of Canada with blue pencil crayon, and as I wove my way in and out of the bays, inlets and fiords where the ocean met the land, I pretended I was an explorer, coming to this country for the first time, traveling in and out where no one had gone before. When I started to drive, and we would go to new locations, I would buy roadmaps. There would always be a flutter of anticipation as I unfolded the map and looked at all the places that I would drive to, through and around. It was always fun for me to check routes and distances and points of interest along the way. Those maps were important documents because they kept us going in the right direction and showed us the best way to get where we were going.

That's what the Bible does for us in life. It's God's roadmap for us to navigate all the twists and turns of the road we must travel. Some people think of the Bible sort of like a good-luck charm – if I read it regularly, I won't have any problems or difficulties in life. But it's not a good-luck charm. It's a guide for life. If you follow the advice found in the Bible it will help you through those times when you do have problems and difficulties. The instruction in the Bible comes from God and is meant to make us wise. The wise man is the one who knows what God wants him to do does it.

SUNDAY SCHEDULE

Sunday School - 9:30 am
 Coffee Time - 10:30 am
 Worship - 11:00 am
 Bethsaida French Fellowship - 1:30 pm
 Young Adults - 6:00 pm

COMING UP

Jan 12 - Church Prayer Day
 - Prayer Meeting @ 7:00 pm
 Jan 14 - Three-Score PLUS Bible Study & Prayer Meeting @ 2:00 pm
 Jan 15 - Senior High @ 7 pm
 Jan 15-17 - Junior High Retreat @ Pedde's cabin
 Jan 17 - Sunday School @ 9:30 am
 - Coffee Time @ 10:30 am
 - Worship @ 11:00 am
 - Bethsaida French Fellowship @ 1:30 pm

TRUST FUND

A trust fund has been set up for Rob & Karen S's son Isaac. If anyone is interested in making a donation, cheques can be made payable to the *Bank of Montreal* and placed in the envelopes provided on the table in the lobby and submitted to the "Office" mailbox.

ROWANDALE BAPTIST CHURCH
 STATS FOR JANUARY 3RD, 2016

ATTENDANCE 261
 GENERAL OFFERING \$10,295.34
 WEEKLY GOAL \$9,760
 GIVING TO DATE \$10,295.34
 BUDGET TO DATE \$9,760

YOUTH STUFF

BOOST EVENT
 FRIDAY, JANUARY 15TH

This coming weekend is the JUNIOR HIGH Retreat at Oz & Anita P's cabin. Please meet at Rowandale this Friday, ready to leave at 6 pm. SENIOR HIGH students will meet at 7 pm at Rowandale for a scavenger hunt.

The next combined BOOST event will be on Friday, January 22ND - we will be participating in an evening of laser tag with other MBA Youth groups, meeting at Rowandale at 6 pm, pick up at 9:30 pm. Registration forms and waivers must be filled out. Cost is \$12.00.

YOUTHQUAKE for Senior High students is February 12-14TH - register today! See Pastor Ben for full details.

Young Adults

TONIGHT AT 6:00 PM

Meeting here tonight starting at a new time of 6 pm. Come on out and bring a friend! For more information see Pastor Ben.

NEW ADULT ELECTIVE

Today we started a new study on Spiritual Gifts upstairs in the Boardroom from 9:30-10:30 am. This class will provide the opportunity to deepen your understanding of what the Bible teaches about spiritual gifts, and also give practical steps to discover how God has gifted you to serve others. If you missed today, you can still participate in the following weeks.



FEBRUARY 5-7, 2016

Come for a fun-filled weekend at Camp Nutimik with our Rowandale Church family! Enjoy the winter beauty of the outdoors with tube sliding, floor hockey, broom ball, hiking and much more, or simply relax in front of the fireplace and challenge someone to a board game! Registration forms with pricing are available on the table in the lobby. Gluten free meals are available! Fill your form out today!! For more information speak to Aaron & Laura P or Evan & Nancy P.



CHURCH PRAYER DAY

TUESDAY, JANUARY 12TH

Church Prayer Day will be on Tuesday, January 12th with the Prayer Meeting held at 7:00 pm. All are welcome!



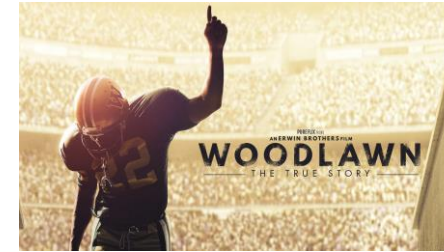
BIBLE STUDY

THURSDAY, JANUARY 14TH

The Three-Score PLUS Bible study will be held this Thursday, January 14th at 2 pm. All seniors are invited! If you have questions please contact Cliff.

BAPTISM

A Baptism is planned for January 31ST. If you would like to be baptised, please speak to one of the pastors.



MOVIE NIGHT

SUNDAY, JANUARY 24TH

6:00 PM

Mark your calendars now for Movie Night. If you missed it on the big screen, now you can see it in the comforts of our fellowship hall, on the "big wall"! Woodlawn is the true story about a gifted high school football player who must learn to embrace his talent and his faith as he battles racial tensions on and off the field. Popcorn and drinks will be provided. Doors open at 5:45 - movie starts at 6 pm! Bring your friends and family and be prepared for a great evening!

2016 CHURCH COUNCIL

MEMBERS

Moderator	Ralf O
Vice Moderator	Leo J
Clerk	Linda N
Care	Cheryl L
Finance	Aaron P*
Facilities	(vacant)
Outreach	Andrea K
Children/Youth	Nancy P
Adults	Luis C
Worship	Rick P*
Fellowship	Gord I*

Those names with an * beside them denotes newly elected to position. Thank you to Carol U, Mic M and Holger R whose terms ended in 2015.

MISSIONARY OF THE WEEK



VERN & GLORIA WAGNER

MISSIONARIES
ROMANIA

Vern and Gloria worked at Camp Caroline in Alberta for eight years, serving as maintenance manager and head of housekeeping. The experience they have running a camp is exactly what is needed at Camp Falcon Rock in Romania, a campground that is in the beginning phase of development. Since they've signed on to the team, all of the pieces have fallen into place for them to leave for Romania, though they are still looking for more partners to support them in their efforts. Please pray for them as they continue to raise support to move to Romania full time. For more information, visit <http://nabonmission.org/missionaries/vern-and-gloria-wagner>.

MINISTRY OF THE WEEK

TEMPLE BAPTIST CHURCH
SWAN RIVER, MB

NEAL (AMY) EFFA
 SR. PASTOR
 ROB (DANA) TER HORST
 YOUTH